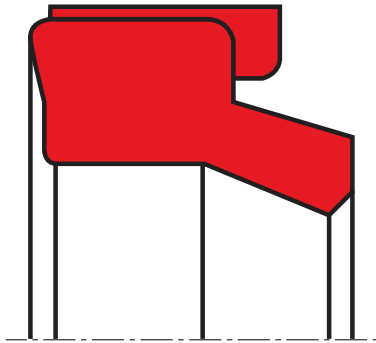


cushioning A69

seal spec



description

the cushioning seal has been designed specifically for use in braking systems at the end stroke of the piston, in pneumatic cylinders.
the profile eliminates the limitations in this particular application that some seal types, like O-rings and lip seals have.
the inlet chamfer on the sealing lip and the groove on the sealing border at the bottom makes the cushioning very effective.
another advantage is the utilisation of polyurethane, which with its high impact and abrasion resistance gives the part a very long life.

application



category of profile

machined or molded/standard/trade product.

area of application: pneumatic

operating parameters & material

material	temperature	max. surface speed	max. operating pressure ¹
s-mart PU (90 Shore A)	-30°C ... + 80°C	≤ 1.0 m/s	16 bar (1,6 Mpa)

*the stated operation conditions represent general indications. it is recommended not to use all maximum values simultaneously.
surface speed limits apply only to the presence of adequate lubrication film.*

¹ pressure ratings are dependent on the size of the extrusion gap.

surface quality

surface roughness	Rtmax (µm)	Ra (µm)
sliding surface	according to seal data	
Rtmax [µm]	1.00 - 4.00	< 16.0
Ra [µm]	0.10 - 0.40	< 1.6

tolerance recommendation

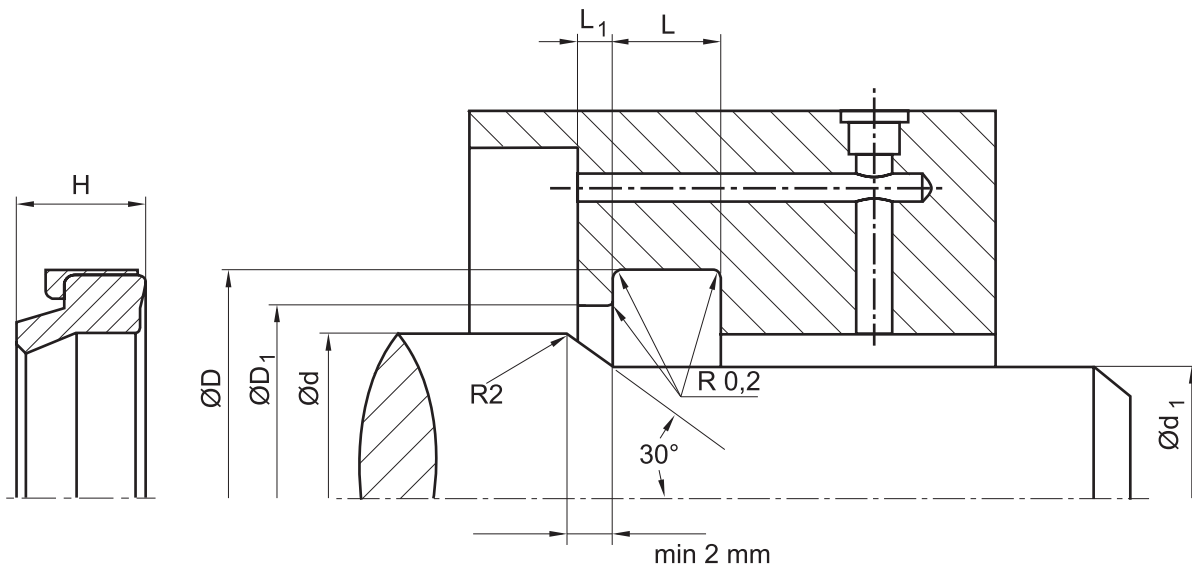
seal housing tolerances	
d	h10
D	H11

fitting & installation

the installation is simple, we recommend lubricating the seal with grease.

**seal & housing recommendations**

please note that we are able to produce those profiles to your specific need or any non standard housing. for detail measurements, please see seal-mart catalog...



don't hesitate to contact our technical department for further information or for special requirements (temperature, speed etc.), so that suitable materials and/or designs can be recommended.